



Federation of
City Farms
& Community
Gardens

Growing Places

Members' newsletter, Issue 4 - November 2009



- **City Harvest Festival 2009 - bigger and better than ever**
- **Growing and playing at Hammersmith Community Gardens**
- **The new vetting and barring scheme and how it applies to you and your organisation**

Make the most of your membership

FCFCG exists to support, represent and promote community managed farms and gardens. As an FCFCG member you are entitled to the following benefits:

- You are part of the wider movement of city farms and community gardens that benefit from the support, representation and promotion FCFCG provides. We work on your behalf to keep the aspirations of the movement on the political agenda, lobbying effectively at a local and national level whilst promoting good practice, improving networks and creating training and development opportunities.
- Advice and support is available to you from our Development Team. We provide advice on a wide range of subjects including funding and budgeting, community involvement, animal husbandry, animal welfare, horticulture, land management, local food growing, insurance, legal issues, staffing, youth work and child protection. FCFCG is also well placed to provide members with emergency information and support (eg in the event of disease outbreaks such as foot and mouth disease or avian/swine flu).
- You receive our quarterly members' newsletter, *Growing Places*, and copies of our general newsletter and annual review. You can also receive regular e-newsletters to keep you informed of news, funding, training and information resources.

- Local network and training events are run throughout the year on themes requested by our membership. These events are free or highly subsidised for members.
- You have access to the members' zone of our website, including our resource centre and free downloadable copies of our publications.
- Hard copies of our publications are available free to members on request.
- We provide advertising and promotion for your events, job vacancies etc on our website and in our mailings.
- We co-ordinate specialist support networks including the School Farms Network and the Allotments Regeneration Initiative.
- You have access to FCFCG grants and bursaries, when available, and are entitled to subsidised feasibility studies and consultancy services.
- We negotiate with insurance companies to set up appropriate insurance schemes for our members.
- Members in England with an income of under £10,000 are automatically entitled to free NCVO community membership.

Please contact us if you would like to find out more about any of the benefits of membership listed.

Tel. 0117 923 1800
admin@farmgarden.org.uk

Your Federation needs you - become a Voting Member today!

Voting Members and of course the Board, play a key role in ensuring that FCFCG continues to be led by and truly represents the wishes and interests of the community farming and gardening movement.

Farm/Garden Member projects that have been established and operational on site for at least a year are eligible for election to become Voting Members of the Federation of City Farms and Community Gardens.

If you wish to become a Voting Member, we will arrange for someone from FCFCG to visit your project.

The purpose of this visit is to ensure that your organisation is operating within the ethos of FCFCG – that you can demonstrate both a sufficient level of community involvement in the management of your organisation and good practice in your activities.

Please note that there is no increase in annual membership fees if you are elected as a Voting Member.

To find out more or request an application form, please contact Jeremy Iles, FCFCG Director, at The GreenHouse. We would really like to hear from you.

jeremy@farmgarden.org.uk
Tel. 0117 923 1800



Welcome to the autumn issue of *Growing Places*. As the nights draw in we can look back over another full year for FCFCG and its members.

The folk at Hammersmith Community Gardens Association are certainly reaping the rewards of all their hard work - read all about all their new initiatives on page 8.

There were lots of fantastic events held all over the UK these past few months. We've reports on the 11th City Harvest Festival and the first mini-agricultural shows in Cardiff and Nottingham.

This autumn brings other changes - including the new vetting and barring scheme. Turn to page 14 to check out how these changes might affect you and your project.

Diane Godwin, Editor

Welcome to new members

We now have 494 members. A warm welcome to those that have joined since the last issue:

- Green City Action, Sheffield
- Valley Organics Ltd, Stroud
- Glynneath Community Garden, Neath
- Grace and Flavour, Surrey
- Work Forward Visiting Group Enterprise, Coventry
- Pitfield Gardening Project, Chelmsford
- Cloughmills Edible Garden, County Antrim
- Development of Community Gardens, Walsall
- Summerwood Community Garden, Nottingham
- Balmullo Community Garden Association, Fife
- Tumbledown Community Farm, Dorset
- Greenhill Community Resource Centre, Falkirk
- Scotlandwell Community Allotments, Fife
- Cromarty Allotments and Gardens Society, Ross-Shire
- Lambhill Stables, Glasgow



- Campbeltown Community Organic Garden, Argyll
- Drylaw and Telford Community Garden, Edinburgh
- Transition Edinburgh South Food Gardening and Trees Group
- Community Project - Insole Court Kitchen Garden, Cardiff
- Hidden Manse Garden, Edinburgh
- Wheatfield Backgreen Association, Edinburgh
- Tayport Community Trust, Fife
- Greyfriars Herb Garden, Edinburgh
- Home Grown Community Owned, Exeter
- Dadswork, Edinburgh

Inside this issue

FCFCG news	4
New FCFCG Rare Breeds Network	6
The Hidden Gardens	7
Hammersmith Community Gardens Association	8-9
Queen's award for Prudhoe Community Allotment	10
Events, networking and training	11-14
11th City Harvest Festival - Report	12-13
Diary	14
The law is changing...	15
Resources	16
Funding opportunities	17-18
FCFCG contact details	19

Please note:

The copy date for the next issue is 15 January.

We are more than happy to include articles written by members - the newsletter is a key means of sharing your experiences, good practice and news with others in the community farming and gardening movement.

Please send any items for inclusion to the editor.

diane@farmgarden.org.uk
Tel. 0117 923 1800

On the cover:

Young competitors in the ring with their charges at the 11th City Harvest Festival. Full report pages 12-13.
© Adrian Lewis

AGM report



FCFCG Board members visited the Woodlands Farm Trust in Kent before the AGM

We held our Annual General Meeting on 19 September, to coincide with the highly successful City Harvest Festival at Capel Manor College, Enfield (see pages 12-13 for a full report). Formal business was kept to a minimum – to allow delegates the chance to spend more time enjoying the show.

Jeremy Iles, (Chief Executive) reported on the upsurge in interest in food growing by community groups and how this is reflected in our expanding work programme across the UK. The demand for allotments is now so great that many sites have long waiting lists and people and community groups are seeking alternatives - a trend which the Federation is responding to with an exploration of the idea of a community land bank (more next issue).

The meeting concluded with a presentation about our new work programme in Wales which was established in spring 2008.

Many new groups have become members since then and Katie Jones (Wales Development Coordinator) has established strong working relationships with a wide range of partners.

We also welcomed two new members to our Board - Sally Partridge from Greenmeadow Community Farm in Cwmbran and Jane Jeoffrey from Arkwright Meadows Community Gardens in Nottingham.

We are always keen to encourage further representation from our members on our Board. If you would like to stand as a Board member, or if there are any issues that you would like to raise, please contact Jeremy Iles in the first instance.

jeremy@farmgarden.org.uk

We will shortly be conducting a review of our memorandum and articles of association, to ensure that the Fed continues to be 'fit for purpose'. Further details next issue.

FCFCG Faces

Elaine Thomas joined us at the end of August as our new administrator. Hers is the friendly, helpful voice that will greet you when you contact us at the National Office.

"I was managing a pub with my partner on a heritage railway line in Shropshire when I decided to go back into full time education. While running the pub I completed a degree in History and Politics, graduating last year.

"Having gained a place on an ill-advised graduate management training scheme I moved to the big city.

"I have always been interested in working for an organisation that benefits the community and after months of searching I came across the Fed.

"I am delighted to be working for such a forward thinking, community-minded organisation and look forward to coming into contact with more of the Fed members over the coming months.

"Being keen to get into the spirit of things I have added my name to a waiting list for an allotment."



Scottish conference a great success

“ Thank you very much for a great conference. I made so many contacts. We must all join together to create one big voice.”
 “Overall fantastic event!” “ I met a good many new people and will be doing my best to keep in touch with them.”

These are just some of the kind words people had to say about our National Networking Event which took place on 2 October.

More than 120 people attended, from community projects all over Scotland, from Skye to Eyemouth, Inverness to Bute and Fort William to Lanarkshire.

Delegates swapped advice, as well as seeds, and since the event we have had several applications for travel bursaries, so that projects can follow up their new contacts with site visits to learn more about each other.

A report of the event, including notes from the workshops and contact information for all of the ‘drop in sessions’ (on allotments, orchards, planning aid and funding) will be posted on our website shortly.

Don’t worry if you missed out on our national networking event though, as there should be a regional networking event taking place near you soon – dates for meetings in Glasgow, Inverness, Edinburgh, Bute, Dundee and Forth Valley will be posted on our website in the next few weeks.

Our fieldworkers are also available for site visits and to give advice – get in touch with Vicki to find out more, especially if you’re in the Glasgow region as we will be recruiting a fieldworker to cover this area before the end of the year.

vicki@farmgarden.org.uk



Attendees on a recent ‘Seeing is believing’ tour at Solstice Nurseries, Aberdeen

Northern Ireland update

Following an invitation to attend the inaugural Allotments Forum for Northern Ireland on 5 August, we have been considering how best to take this work forward. After discussion with a small advisory group we have decided to:

- Appoint a voluntary representative to start to refresh our contacts in Northern Ireland and The Irish Republic (Austin Herron from Eden allotments has now started in this voluntary role).
- Plan further Allotments Forums in 2010
- Plan a wider community growing event for late spring 2010, and discuss the possibility of developing an appropriate support network.

To make contact with Austin Herron please email: austinhero@googlemail.com

Site visit travel bursary scheme up and running in Wales

Wales members have been making the most of the FCFCG travel bursaries that are available to visit other projects to exchange ideas, advice and enjoy a great day out.

Members from Mid Wales got together to coordinate a joint visit to projects in South Wales, including; Field-days Organic, Amelia Trust Farm, Down to Earth and Cymdeithas Y Dalar, a community allotment project in Llandelio.

Teresa from Eco Dyfi said: “We had an incredibly interesting, informative, inspiring trip this

week ... We would recommend a similar trip to all project workers and volunteers: we have learnt a lot, including things about our expectations and limitations; and we have had time together to share and reflect on our ideas.”

Other members have visited projects in Bristol, Pembrokeshire and Swansea.

If you would like further information about the site visit travel bursary scheme in Wales, contact Katie Jones, Wales Development Co-ordinator.

katie@farmgarden.org.uk

New - FCFCG Rare Breeds Network

We are setting up a new Rare Breeds Network for our members to learn new skills and share experiences - or even animals. New-comers to the rare breeds world will be able to find out what's out there and how to care for particular breeds.

Derek Wakefield-Brown of Robinswood Hill Country Park Rare Breeds Centre (and FCFCG fieldworker) will be heading up the network, the form of which is currently being finalised. There will be training days within the next twelve months - so watch this space if you are thinking of stocking rare breeds.

The network will be linked with the Rare Breeds Survival Trust (RBST) who are the rare breed experts in the UK. The charity collects data, carries out research and provides guidance and advice for people who stock rare breeds. Anyone with just one rare breeds animal can become a individual member of the trust - www.rbst.org.uk

From the RBST website: "Throughout the world one breed of farm animal becomes extinct every month. RBST is working to make sure that this does not happen in the UK."



If you would like further information about these plans please contact:

caitlyn@farmgarden.org.uk

Spot and FCFCG are 30 next year - join in the celebrations!

FCFCG, which celebrates its 30th anniversary next year, is teaming up with Penguin publishers, whose very popular children's book character Spot The Dog also reaches the grand old age of 30 in 2010. Penguin will be creating activity packs for city farms and running a national competition based around the Spot character.

It's a great opportunity for FCFCG members to get some free activity sheets featuring a very popular children's character, as well as the possibility of some profile-raising publicity.

Several farms have already said they are interested in taking part. If you want to join them, then please contact Ken ASAP. When you email, please provide a rough estimate of your annual visitor numbers.

ken@farmgarden.org.uk



© Eric Hill/Salspot Ltd., 2009

Other 30th anniversary plans - progress

We have started to investigate holding a two day conference and gathering in autumn 2010 – this will most likely be in Nottingham to allow easier travel from all parts of the UK.

Our Heritage Lottery Bid is also being submitted soon.

Look out for further information in next issue.

Ecoli - advice

The recent outbreak of ecoli and the attendant media coverage is a cause for concern, and there is some apprehension that any future changes in government guidance may impact upon city farms in particular.

Of course the Fed recognises and promotes sensible precautionary measures. We will keep members informed and advise on good practice as appropriate, whilst emphasising the positive educational and community development benefits of city farms and community gardens.

A useful document about minimising the risk of ill-health on farms which accept visitors is published by the Health and Safety Executive and is available to download using the following link:

www.hse.gov.uk/pubns/ais23.pdf

The Hidden Gardens, Glasgow

A previously derelict industrial site on Glasgow's south side has been transformed over the past six years into a tranquil and inspirational haven. The Hidden Gardens is designed to embrace various ideas, rituals and forms from different cultures. It merges these ideas through the designers' and artists' work located in it.

The Hidden Gardens is an award winning green space and offers visitors a unique experience, found nowhere else in the city. It aspires to describe the kind of world it would be good to live in, not the world as it is.

During Doors Open day events on 19 and 20 September, the Gardens were literally full of life! Over 1000 visitors to the Gardens joined guided tours to hear some of the background to the garden design and gain an insight into how the space has become a community resource from their Taskforce volunteers. A free audio tour is now available all year round.

Many visitors to the Gardens also take the opportunity to make a wish for peace or for someone special, using the Gardens' unique wish tree tags. Donations raised from the sale of wish tags contribute to the upkeep of the Gardens.

The Gardens are committed to forging links with the local



community; on 22 September the Gardens hosted Hamara Safar (Our Journey), part of the wider Eid on the Drive celebrations marking the end of Ramadan.

The event was attended by 450 local families who participated in a children's moonlight walk through the wildlife area, story telling, a fashion show for young women, a local food exchange, a promenade performance by Tram-direct and two exhibitions 'She settles in the Shields' and 'Pardesi Heroes' celebrating Scotland's Diverse Heritage and telling the story of those immigrants who first settled in the area during the 1950's and 60's.

Garden Design Workshops

This autumn the Gardens also held a series of garden design workshops for local people to learn some practical garden design skills and a little more about horticulture in general. Topics included:

- Conducting a site survey and site analysis – how to conduct a site survey of your garden,

considering all aspects such as orientation, aspect, soil condition etc, and how to sketch your ideas out.

- Planting design – how to choose the right plant for the right place in your garden. Workshops also looked at planting styles and themes to achieve the look you are after.
- The design process - how to consider composition in your garden.

And finally, a special plant sale of stock from their herbaceous border was also launched during Doors Open Weekend in September. All donations raised will support the development of the wildlife area and the creation of a new natural meadow to attract and protect wildlife species such as bees and butterflies to the Gardens.

www.thehiddengardens.org.uk



Play and grow at Hammersmith Community Gardens Association

Hammersmith Community Gardens Association (HCGA) manages three sites in Shepherd's Bush: Loris Garden, Godolphin Garden and the glasshouses in Ravenscourt Park. The Association is also a partner in the Phoenix High School Farm project, works in seven local primary schools and runs play schemes and family learning activities at each of the three sites. Cathy Maund, HCGA Manager, gives a rundown of their current activities and plans for the coming year. Hold onto your seats!

"This year has been really full on for everyone involved at HCGA. In June we launched a new natural play area at the Loris garden site that was designed by Felicity Robinson and pupils from year 6 at nearby Lena Gardens school. Funded by the Big Lottery Play Programme and Access to Nature, the area has been well used throughout the summer by local families.

"At Godolphin Garden this summer, we took delivery of an Eco Shed, a small sustainable



© All photos - Adrian Lewis

building that will provide facilities for volunteers and staff - a great improvement as previously there wasn't anywhere to store tools or make a cup of tea.

"We were keen to minimise the carbon footprint of this build and to achieve this it was constructed off site in Folkstone and delivered by the builders, Ecolibrium Solutions. We had hoped to include solar panels but this wasn't possible within the budget. However, it is something that we

are hoping to add at a later date. The project was funded by a grant from the local authority and the Western Riverside Environment Fund (landfill tax money).

"HCGA has been managing Godolphin Garden since 1988 and with funding from the Big Lottery Changing Spaces grant we are also revamping the rest of the garden including planting, raised beds, improvements to entrances and interpretation materials.



"In September we celebrated the improvements with a community festival. With funding from London Play, we were able to close the road and hold a series of old fashioned games. We also played host to Cinocabagogo - the smallest solar powered cinema in the world, housed in a converted London taxi cab!

"The Association has also received funding from the Big Lottery Local Food programme to run a three year 'Get Growing' project to promote food growing with nursery aged children. Lucy Smith has been appointed to co-ordinate the project which was launched on the 9 October at the glasshouses where the project will be based.

"Working with nurseries, children's centres and pre schools,

the project will provide site specific advice and training for staff. Our volunteers will also be growing a wide range of fruit and vegetables for the project.

"Freightliners Farm joined us at the launch to make honey with children from Vanessa Nursery and South Fulham Children's Centre. Guests were also invited to try a parsnip, hazelnut and beetroot and chocolate cake (which tasted better than it sounds!) emblazoned with the project logo.

"We are currently awaiting the outcome of a bid to Access to Nature that will offer training for people living in local hostels based in the garden sites and will also offer opportunities to work on larger nature reserves in north west London and Essex."

www.hcga.org.uk



Noticeboard

Do you dream of the Good Life?

Do you live in the suburbs? Do you or would you like to keep livestock in your back garden? Do you dream of a self sufficient life?

An independent TV company is looking to film families or couples who have decided to recreate the Good Life in their own back yards. If you have started to keep animals recently or are planning on keeping them in the near future then please get in touch.

They would especially like to speak with those who are keeping bees, chickens, pigs, goats, sheep etc. They are also looking to meet those who are growing and rearing food in their own back garden to cook with. If you think that you may be able to assist or would just like to find out more, contact

Tel. 0207 255 5434
bernardmarkey@splashmediatv.co.uk

Chicken out - Campaign for a free range future

Compassion in World Farming and River Cottage have launched this campaign to improve welfare for chickens and give a fairer deal for farmers. They need thousands of signatures to convince supermarkets, farmers, government regulators and anyone else involved in this unacceptable business that they must change.

www.chickenout.tv

GRA's Outstanding Achievement

The Gardens Residents Association (GRA) in Haringey, London, are extremely proud to have come away with The Outstanding Achievement Award in the RHS Britain in Bloom Neighbourhood Awards Section.

Poet's Corner (in Ealing), another FCFCG was awarded second prize in the Community Garden award.



Queen's award for Prudhoe Community Allotment



The Queen's Award for Voluntary Service was established to recognise groups of individuals who are giving their time freely for the benefit of others. It is the highest honour that can be bestowed upon groups of this kind and is equivalent in status to the MBE. A total of 750 groups have received the award since it was created in 2002.

The Prudhoe Community Allotment in Northumberland, under the leadership of Joan Russell, was nominated for this award by their local vicar. In June, the group learnt that they were one of three winners selected from 406 local nominations in Northumberland and one of the 95 volunteering groups from across the UK to win the award.

The project was set up in 2001 when there was seen to be a great need for specific facilities to support the therapy of allotment gardening for the older and less able-bodied and disadvantaged in the community. A small volunteer group evolved, led by Joan. They designed and built

an allotment plot containing raised beds, a toilet, sheds, greenhouses and wheelchair accessible pathways. Since then the group has expanded and has now raised over £60,000 to improve the accessibility of the whole allotment site. The project is completely voluntary and all expenses are met through fundraising and their ethos of sustainability.

Currently there are 40 members who support each other using horticulture as a social therapy, whilst acquiring new skills and achievements. They hold regular training sessions, inviting the local community to participate. They also sell their plants and organic vegetables in the local community to help raise funds.

The group now supports a wider range of people with special needs and mental health issues. Seeing the increased confidence of their members is the 'raison d'être' of this valuable community asset.

At a special award ceremony in Alnwick Castle, home of the Duke

and Duchess of Northumberland, the group were presented with a commemorative crystal and a certificate bearing the signature of the Queen. The reception was very informal and the members present were given a guided tour of the state rooms.

"The event was absolutely superb," said Joan, "I couldn't believe the atmosphere and how relaxed the whole event was. It was a wonderful occasion which will remain in everyone's memory for years to come."

The group will also receive four tickets to a Buckingham Palace Garden Party in 2010.

www.prudhoe.org/allotment



First Meadows Village Show a winner!

Over 500 people turned out for the first Meadows “village” show, hosted by Arkwright Meadows Community Gardens, Nottingham.

Locals took part in competitions featuring the best, largest and ugliest vegetables, tray gardens, flower arrangements, the homemade category included jams, chutneys, cakes and knitted and crocheted items.

Other FCFCG member organisations in Nottingham also took part, entering the show garden category (for which they each had a metre square to represent their organisation).

Prizes were awarded for all the categories and competition was fierce! There were a host of activities for all ages, including



welly wanging, tug of war, crockery smashing, live music, swing boats, animal displays and craft stalls.

Cathy Symes, community development worker at the gardens, said: “We set up this event to celebrate the growing culture and the growing success

of people in The Meadows and across Nottingham.”

“We are seeking to recreate the atmosphere of the village show, in the heart of The Meadows. We are hoping this will be the first of many. We need volunteers for next year and we want to make it bigger.”

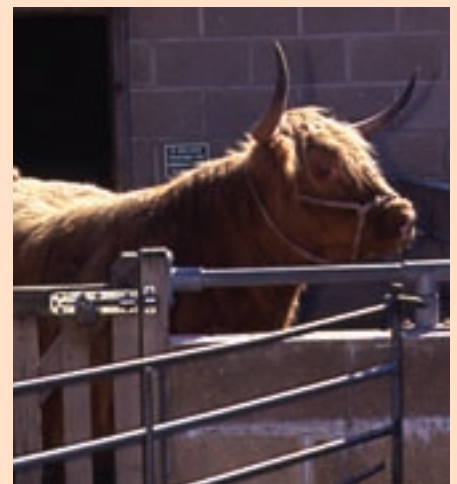
South West regional gathering at Robinswood Hill Rare Breeds Centre and St James City Farm

A fantastic day was had by all who attended the regional gathering in Gloucester on 17 October.

Following a tour of St James City Farm, the group took part in a local food growing workshop. After lunch Derek Wakefield-Brown of Robinswood Hill Country Park Rare Breeds Centre (and FCFCG fieldworker) gave a talk on keeping animals, incorporating Health and Safety

and partnership working. The day ended with a tour of the fascinating rare breeds centre.

The day proved really useful in terms of information sharing, with people attending from Wales, Bristol and as far afield as Derbyshire. Lawrence Weston City Farm in Bristol brought a group of 14 of their volunteers. All in all it was a productive and inspiring day. A big thank you to our fantastic hosts.



City Harvest Festival 2009



The 11th London City Harvest show took place on 19 September at Capel Manor College in Enfield, London with a record number of animals on show. We welcomed the Minister of State for Environment, Food and Farming Jim Fitzpatrick and his wife Dr Sheila Fitzpatrick, who were able to meet many of London's farm managers.

We were once again blessed with sunny weather, and visitors could admire the horticultural displays, learn about community projects, make an eco-bag, try pottery, observe a blacksmith at work, or simply enjoy the sight of city kids taking ferrets for a walk.

Many people commented on how impressed they were by the young people's enthusiasm for the animals they showed. Our animal judges said that the standard of animal husbandry was on a par with the Rare Breeds show at Hatfield House the previous weekend.

FCFCG Chair, David Drury, attending the show for the first time, said: "The atmosphere impressed us all as being exiting, great fun and welcoming to everyone. Congratulations to all concerned."

This year the Special Metropolitan Public Gardens Association prizes of £150 for best displays were won by King Henry's Walk Garden, and by Surrey Docks Farm. The Horticulture plate was won by Surrey Docks Farm and the trophy for the Animal show was awarded to Vauxhall City Farm, who also won the tug of war trophy.

Wellgate Community Farm's Amy Robertson won best young animal handler and the Supreme Champion award for the best animal in show was won by Aspen, a British Saanen goat, also from Wellgate Community Farm.

The blacksmiths' prize of beautiful wind chimes, forged at the show, went to Kentish Town City Farm, for a stunning display of produce.

This year's show was supported by Grassroots Grants Enfield and Waitrose Community Matters.

The show could not take place without the energy and enthusiasm of all those who work to keep London's community gardens and farms going. Please contact london@farmgarden.org.uk if you would like to be involved.

Thanks to:

- Rob Gayler and all those who helped with the show set-up
- Bronwen Wilson for co-ordinating the animal show
- Liz, Pip and Sian and all from Freightliners Farm for all their hard work setting up the horticulture marquee
- Chris Pounds for sterling work as compere
- Simone Uncle and everyone who worked so hard to provide children's activities in the Have-a-Go tent
- Rev. Roger Gayler for refereeing the tug of war
- Jo, Tom and Sally-Jayne Gallagher for co-ordinating the camp kitchen
- Cathy Maund for the guests' catering
- Julie Ryan and Capel Manor College
- All our judges - Derrick Cutmore, Ray Bowler, Paul Bryant, Josh, Tom Gallagher, Sue Haddleton, Kathleen Earley, Mark and Martin Day, Heidi Seary and Katie Jones and to Mrs Joyce Bellamy for presenting the MPGA prizes
- Special thanks are due to Michael Elliott, who generously gave so much of his time to general site management on the day and also during the show set-up.



The countryside comes to the heart of Riverside



Riverside in Cardiff hosted its very first Agricultural Show on 15 August. Local residents got a chance to meet and handle animals from Greenmeadow Community Farm, enter their home-grown vegetables or home-made food in the local produce

competition and exhibition, model their very own city farm out of clay and take part in environmental activities.

The event was co-ordinated by a partnership between local residents, FCFCG, Riverside Community Market Association, South Riverside Communities First and Cardiff West Transition Town group. It was funded by a Countryside Council For Wales Grant Scheme 'Countryside on Your Doorstep' awarded by Cardiff City Council.

Katie Jones, Wales Development Co-ordinator said: "Agricultural Shows have been a long-standing community celebration of the rural way of life in Wales and this has been a great opportunity to bring an element of the countryside into the heart of the Welsh capital. Not only has the show celebrated local diversity in the way things are grown, cooked and consumed in this multi-cultural community but it has also enabled local residents, especially children, to interact with animals more typically found on a farm and in the countryside"

Host a Green Communities course

These Energy Saving Trust courses can cover project planning and delivery of a community energy project, energy efficiency, sustainable energy use and renewable energy technologies, how to conduct energy audits for community buildings and old or listed buildings, funding a community energy project, and how to get involved with the local authority planning process. All you have to do is provide the venue and the delegates.

www.energysavingtrust.org.uk/cafe

FCFCG Diary

12 November, Orchard Cardiff: 'Turning Grey Green' Training
At: Forest Farm, Cardiff
Orchard Cardiff, is a partnership between FCFCG and Transition Cardiff which will involve fruit trees being planted by community groups across the city. At this event participants will learn about different varieties, planting and maintenance and will get an opportunity to visit the community orchard at Forest Farm.

18 November, Growing Communities in Scotland - Regional Networking event
At: Urban Roots, Glasgow
Contact: vicki@farmgarden.org.uk

21 November, Community Orchard Training Day
At: Lawrence Weston Community Farm, Bristol
Contact: Caitlyn Jones
caitlyn@farmgarden.org.uk

26 November, East Midlands Autumn Network and Training event
At: Gorse Hill City Farm, Leicester
Will include FCFCG and member update, OPAL workshop on air quality and lichen, workshop on making holly wreaths, farm tour, Local Food project presentations.

2 December, South West Wales Regional Networking Event
At: Cymdeithas Y Dalair, community allotment project at Dinefwr castle, Llandeilo
27 January, South East Wales Regional Networking Event
At: Greenmeadow City Farm, Cwmbran

The law is changing...

As many of you will be aware, new measures have recently been introduced to help prevent unsuitable people from undertaking paid or voluntary work with children or vulnerable adults. This is called the Vetting and Barring Scheme (VBS). The service will extend to England, Wales and Northern Ireland. A separate but aligned scheme is being set up in Scotland under the Protection of Vulnerable Groups (Scotland) Act 2007. This article presents a summary of the changes in the law and how these could affect your organisation.

To help implement the new scheme a new public body called the Independent Safeguarding Authority (ISA) has been created. The ISA make decisions over who should be barred from working with vulnerable people. These decisions are legally binding so a barred person must not undertake certain roles under any circumstances. Failing to comply could result in both the employer and the employee or volunteer being prosecuted and even going to prison.

From July 2010 all new employees, those moving jobs and volunteers who want to work with children or vulnerable adults can register with the ISA. From November 2010, all new employees and volunteers must register before they start work. From then it will be illegal to employ people who are not ISA-registered.

Working with the CRB

ISA-registration will not replace the need for Criminal Records Bureau (CRB) Disclosure but represents an extra level of protection. This new scheme helps

to ensure that employers can be more confident than ever before that they are hiring a suitable person by making it a legal requirement for everyone who is working with children or the vulnerable to be ISA-registered.

A CRB Disclosure will reveal if the person has convictions that would make an employer consider them unsuitable to do a specific job, such as convictions for theft, fraud or dishonesty. When used together, the ISA-registration and CRB checking process will provide employers with one of the most comprehensive assessment and review services available to date.

How employees and employers are affected

From November 2010, all new employees and volunteers who want to work with children and vulnerable adults in a wide variety of settings must be ISA-registered before they can be legally employed. Obtaining ISA-registration is the employee's responsibility. There is a one-off cost of £64 (£28 ISA/£36 CRB administration costs). ISA-registration for unpaid volunteers is free.

There are two areas of ISA-registration, one covering working with children and one covering working with vulnerable adults. Once successfully ISA-registered, for either or both groups, an individual is ISA-registered for life in most cases and does not need to reapply. For employers wanting to hire that person they will need to first check their registration status. This can be done online for free. Only then, when a candidate's ISA-registration has been confirmed, can they be taken on.

At first, the scheme will affect new employees and volunteers only. Over time, the registration process will be phased in to include current employees and volunteers.

Does this affect me or my organisation?

As an organisation or individual who undertakes work in a paid or unpaid capacity with children or vulnerable adults, these changes to the law will affect you.

If your organisation has an HR or a finance department, then those staff should be made aware of the Scheme and the legal requirements around ISA-registration. Smaller organisations without these departments must familiarise themselves with the new rules to ensure that they too comply with the changes.

For more information about the Scheme, the Independent Safeguarding Authority, the registration process, who is affected and how, visit:

www.isa.gov.org.uk
Tel. 0300 123 1111

Volunteers and the law

This publication is the first of its kind dedicated to volunteering. Valuable for large and small organisations alike, *Volunteers and the Law* covers all the main areas of concern: expenses, benefits, criminal record checks, health and safety, data protection. Available as a free download.

www.volunteering.org.uk/resources/publications/volunteersandthelaw.htm

Changes to First Aid at Work Regulations

First aid cover in the workplace is a legal requirement. The Health and Safety Executive (HSE) put together a new set of regulations. It is hoped that the new format will make it easier for employers to comply with the regulations.

Key changes include only two levels of risk for businesses and the introduction of a new emergency first aid at work course along with a greater emphasis on taking account of individual aspects of the workplace. Use the



St John's Ambulance workplace training guide to help you understand your requirements.

St John's Ambulance has also published a summary of the changes and a set of tools to help you understand the new regulations.

www.sja.org.uk

New Local Action on Food Network

Local Action on Food is a new network that is coordinated by Sustain: the alliance for better food and farming. The aim of the network is to link together those that are passionate about and committed to a more local and sustainable food system here in the UK.

Membership of the network means contact and support for your project from other members and Local Action on Food staff on a range of local food issues. Other benefits of membership include

- A regular copy of "Rhubarb" our local food magazine
- An invitation to attend our quarterly seminars which will look in depth at a local food issues
- A monthly email round-up of Local Action on Food news including details of events,



funding information and lots more!

- Membership of our various e-mail networks, topics including urban agriculture, ethical catering, local food policy and food co-ops
- A discounted rate on our forthcoming Networking events.

polly@sustainweb.org

If you would like a free trial copy of "Rhubarb" then please email with your postal address.

Book Review



Local Food – How to make it happen in your community

by Tamzin Pinkerton and Rob Hopkins

This book, first published in September, is a great introduction to the local food movement in general, as well as a practical guide on how to get growing food in your local community. It is packed full of interesting case studies on how communities are growing food for themselves - including a few of our members.

Options covered include allotments, community gardens, community orchards, school food projects and CSAs, as well as farmers' markets and food co-ops. Practical advice is given on how to run local food events and how to make a food initiative grow.

The authors come from the Transition movement and this book is in that vein, informing us on how we can make our local communities more sustainable, rather than it being an actual growing guide.

Price £12.95

ISBN 978 1 900322 430

365 Ways to Cut Costs - new publication from DSC

Cost cutting is always important to charities but never more so than now. This book aims to help you turn a difficult situation into an opportunity. It contains 365 ideas for cutting costs without strangling your income or decimating your human resource.

They cover a wide range of subjects from salaries to tax, and from the Internet to public relations. Some are big ideas and long term projects others you can implement today. Using the ideas in this book you can genuinely transform your organisation and potentially save your charity thousands of pounds leaving it well placed to survive the recession.

Price: £16.95

www.dsc.org.uk/publications

Access to Nature - Early closure

Access to Nature is a £25 million grant scheme to encourage people from all backgrounds to understand, access and enjoy our natural environment, particularly those who face social exclusion or those that currently have little or no contact with the natural environment.

They will award grants of between £50,000 and £500,000 to support

projects that deliver one or more of the scheme's main outcomes.

Access to Nature is now scheduled to close its Stage 1 applications by 1 February 2010 with Stage 2 applications to be received by 4 May 2010.

www.naturalengland.org.uk

Big Lottery Fund (BLF) - Reaching Communities

Reaching Communities funds projects that help people and communities who are most in need, and can really make a difference. Projects can be new or existing activities, or be the core work of your organisation. The BLF want to fund projects that respond to needs identified by communities, and those that fund projects that help those most in need including those people or groups who are hard to reach. An extra £20 million pounds has been added to the Reaching Communities programme as part of the recession package launched at the end of June 2009. In

addition, the eligibility criteria for Reaching Communities have been relaxed to accept applications for projects that were previously only eligible for other BLF programmes.

www.biglotteryfund.org.uk/prog_reaching_communities

Free Broadband Awards from BT Community Connections

Community and charitable organisations, working in any field of community benefit, located throughout the UK or Republic Of Ireland can apply for a laptop and a year's free broadband connection.

www.btcommunityconnections.com

Co-operative Community Fund

The Co-operative Community Fund awards grants of between £100 and £2,000 to community, voluntary, or self-help groups that carry out positive work in the

Funding updates

To receive our newsletter in between issues of *Growing Places* make sure you've sent your email address to:

ken@farmgarden.org.uk

city farms and community gardens



Insurance solutions for city farms and community gardens. Policies offering public liability insurance (cover up to £5 million) are available along with a full range of other services including buildings cover, employers liability and cover for special events.

Please contact us to discuss your insurance requirements
Tel. 0113 391 9403
david.still@towergate.co.uk

www.towergaterisksolutions.co.uk

Funding opportunities and resources

community for projects that:

- address a community issue
- provide a good long-term benefit to the community
- support co-operative values and principles
- are, ideally, innovative in their approach

www.co-operative.coop/membership/Community-Fund

Freerunner - Free WiFi access for community spaces and charities

Freerunner is offering to install free WiFi wireless internet access in 50 communities and 500 charity buildings, provided that they have broadband access.

www.freerunr.com

Get technology donations from Microsoft, Cisco and Symantec

Charity Technology Exchange (CTX) enables eligible charities to gain access to donations of the latest technology from major companies including Microsoft, Cisco and Symantec. To see the full range of donors, available products and how to apply for a donation, go to:

www.ctxchange.org

Grassroots Grants

Grants of £250 - £5000 for not-for-profit voluntary or community groups in England. Groups must be led by volunteers, be active in local community for 12 months or more, have an average income (over three years) of less than £30,000 per year, and work for the benefit of your local community.

www.cdf.org.uk

Naturesave Trust

This trust funds specific environmental and conservation projects throughout the UK. The primary function of the Trust is to encourage the greater adoption of sustainable development and it has funded projects ranging from installation of a wind turbine at a school to the conservation of water voles in Dorset. The Trust prefers to provide start-up capital to small projects to get them going. Projects are chosen on an individual basis according to how well they fit with the Trust's criteria and objectives.

www.naturesave.co.uk/trust_naturesave.html

Veolia Trust

This trust supports community and environmental projects across the UK. These could include projects aiming to install or enhance play areas and skate parks, restore footpaths and green spaces, protect natural habitats, improve community halls and restore churches. Projects need to be within five miles of a site operated by Veolia Environmental Services (UK) plc, must come under one of their five funding categories and meet their connected criteria. Their website for further details, which also includes case studies of projects funded to date.

www.veoliatrust.org

Don't keep it to yourself...

Please let us know about any funding, training, resources or other opportunities that might be of interest to other members, so we that can include it in the next issue of *Growing Places*.

diane@farmgarden.org.uk

Community Builders

In *Growing Places, Issue 2 2009*, John Le Corney from Heeley City Farm reported on the potential for member projects to access this £70 million fund (this article is available to download from the members resource centre on our website).

The fund has now gone live and runs until 2011. It offers a mix of loans, grants and business support of between £50K and £2 million. Communitybuilders invests in the sustainability of multi-purpose, inclusive, community-led organisations (sometimes known as Community Anchors), which can be the platform to support empowered communities by:

- providing a place for community activities to take place
- providing and running local services
- stimulating community involvement and enterprise
- generating independent sources of income

We are keen to support our more established gardens and farms, and would be happy to discuss any proposals you might be considering. Please contact Mick Marston, who has attended a roadshow promoting the fund and giving detailed information about the Communitybuilders process.

mick@farmgarden.org.uk
Tel. 01207 562 317

For full details about the fund visit:

www.communitybuildersfund.org.uk/about-the-fund

National Office

All staff at this office can be contacted on: 0117 923 1800

Chief Executive

Jeremy Iles
jeremy@farmgarden.org.uk

Assistant Chief Executive

Ian Egginton-Metters
ian@farmgarden.org.uk

General Manager

Anna Nicholls
anna@farmgarden.org.uk

Information Co-ordinator

Diane Godwin
diane@farmgarden.org.uk

Communications Co-ordinator

Ken Elkes
ken@farmgarden.org.uk

Support Worker

Caitlyn Jones
caitlyn@farmgarden.org.uk

Finance Manager

Jon Stephens
jon@farmgarden.org.uk

Finance Assistant

Doreen Douglas
doreen@farmgarden.org.uk

Administrator

Elaine Thomas
elaine@farmgarden.org.uk

England

London and Eastern Development

Co-ordinator
Catherine Miller
Tel. 0207 485 5001
catherine@farmgarden.org.uk

Midlands Development

Co-ordinator
Heidi Seary
Tel. 0247 667 5211
heidi@farmgarden.org.uk

South West Development Co-ordinator

Pending recruitment.
Tel. 0117 923 1800
southwest@farmgarden.org.uk

Northern Development

Co-ordinator
Mick Marston
Tel. 0120 756 2317
mick@farmgarden.org.uk

Scotland

Development Co-ordinator

Helen Pank
Tel. 0131 623 7058
helen@farmgarden.org.uk

Support Worker

Naomi Knights
Tel. 0131 623 7058
naomi@farmgarden.org.uk

Fieldwork Co-ordinator

Vicki Ferguson
Tel. 0173 862 4348
vicki@farmgarden.org.uk

Wales

Development Co-ordinator

Katie Jones
Tel. 0292 022 5942
katie@farmgarden.org.uk

Northern Ireland

Voluntary Representative

Austin Herron
austinho@googlemail.com

Allotments Regeneration Initiative (ARI)

UK Network Co-ordinator

Deborah Burn
Tel. 0191 262 8276
deborah@farmgarden.org.uk

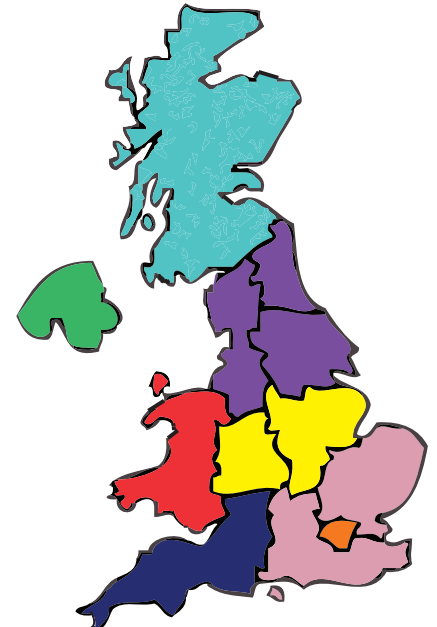
Support Worker

Carmel Ferguson
Tel. 0117 963 1551
carmel@farmgarden.org.uk


Admin Worker (temporary)

Di Appleyard
Tel. 0117 963 1551
di@farmgarden.org.uk

Areas covered by our Development Workers



Key to map

Northern Ireland	
Scotland	
Wales	
South West	
Midlands	
North England	
London	
East England	

Growing with Schools (Coventry)

Senior Development Worker

John Hiron
Tel. 0247 667 5211
john@farmgarden.org.uk

Development Worker

Keeley Thomas
Tel. 0247 667 5211
keeley@farmgarden.org.uk



Growing Places


Members' newsletter, Issue 4 - November 2009



Supporting communities to manage their local green spaces.

Patron HRH The Prince of Wales

Charity no. 294494
Company no. 2011023

 Printed using vegetable-based inks on recycled paper.

National Office

The GreenHouse, Hereford Street, Bristol, BS3 4NA
Tel. 0117 923 1800 Fax. 0117 923 1900 admin@farmgarden.org.uk

www.farmgarden.org.uk

News, events, job vacancies, how to set up a new city farm or community garden, members zone and online searchable database giving details of city farms and community gardens across the UK.

Copy date for next issue: 15 January

We are happy to include items sent in by members, including news about your project, ideas and advice for other projects.

Please note:

This newsletter can be made available in large type, Braille or on audio-tape.
Tel. 0117 923 1800

FCFCG receives funding from many sources including:

