

# Hello / How are you



Social **Farms**  
& **Gardens**  
**Ffermydd a Gerddi**  
Cymdeithasol



# Shwmae -

Shoe-ma-ee



Social **Farms**  
& **Gardens**  
**Ffermydd a Gerddi**  
Cymdeithasol



# Cup of tea



Social **Farms**  
& **Gardens**  
**Ffermydd a Gerddi**  
Cymdeithasol



# Disgled o de

Dish-g-lead (as in the metal) o de (de as in the da at the start of the word 'date')



Social **Farms**  
& **Gardens**  
**Ffermydd a Gerdidi**  
Cymdeithasol





# Pollinators



Social **Farms**  
& **Gardens**  
**Ffermydd a Gerddi**  
Cymdeithasol



# Peillwyr

pie-ll-wirr  
(wirr as the mirr in mirror)

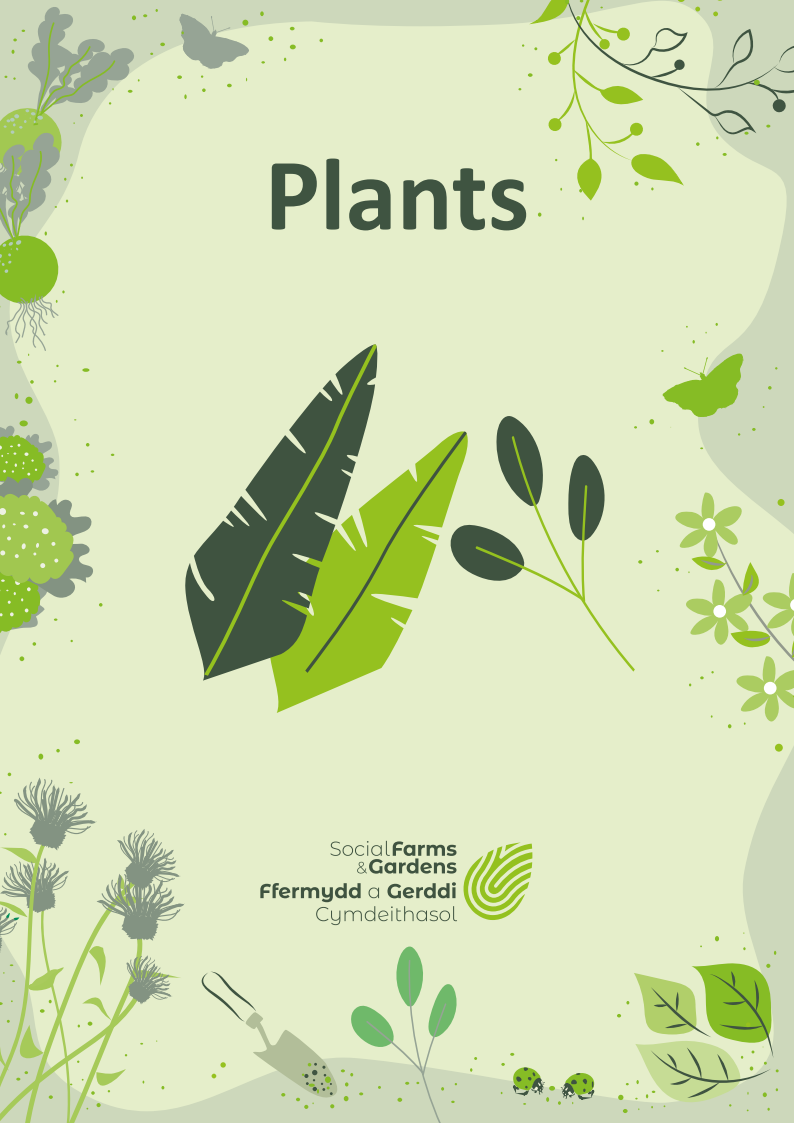


Social **Farms**  
& **Gardens**  
**Ffermydd a Gerddi**  
Cymdeithasol



# Plants

Social **Farms**  
& **Gardens**  
**Ffermydd a Gerddi**  
Cymdeithasol



# Planhigion

plan-hig-ee-on  
(hig to rhyme with wig)



Social **Farms**  
& **Gardens**  
**Ffermydd a Gerddi**  
Cymdeithasol



# Flowers



Social **Farms**  
& **Gardens**  
**Ffermydd a Gerddi**  
Cymdeithasol

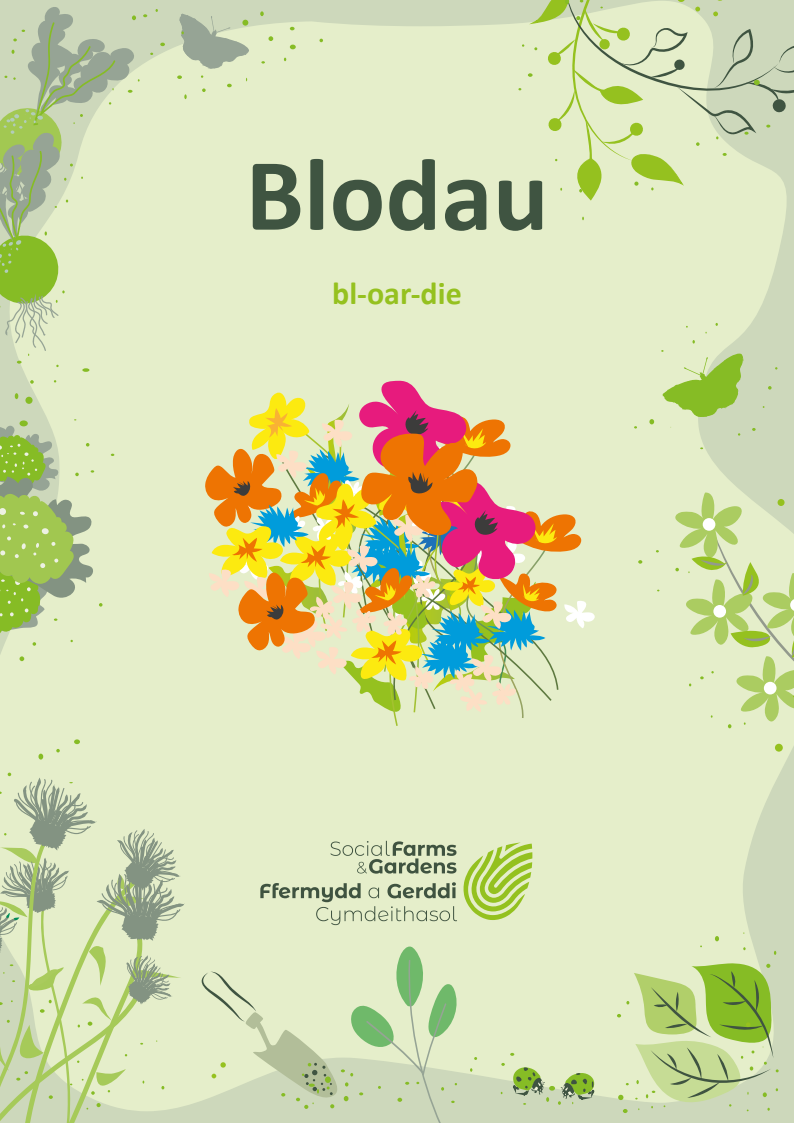


# Blodau

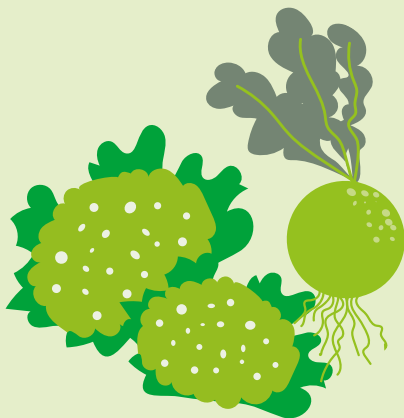
bl-oar-die



Social **Farms**  
& **Gardens**  
**Ffermydd a Gerddi**  
Cymdeithasol



# Vegetables

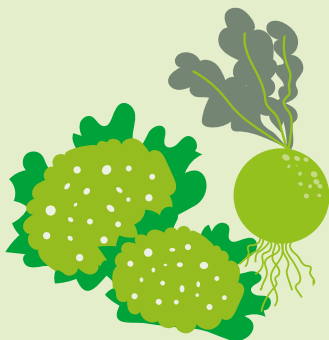


Social **Farms**  
& **Gardens**  
**Ffermydd a Gerddi**  
Cymdeithasol

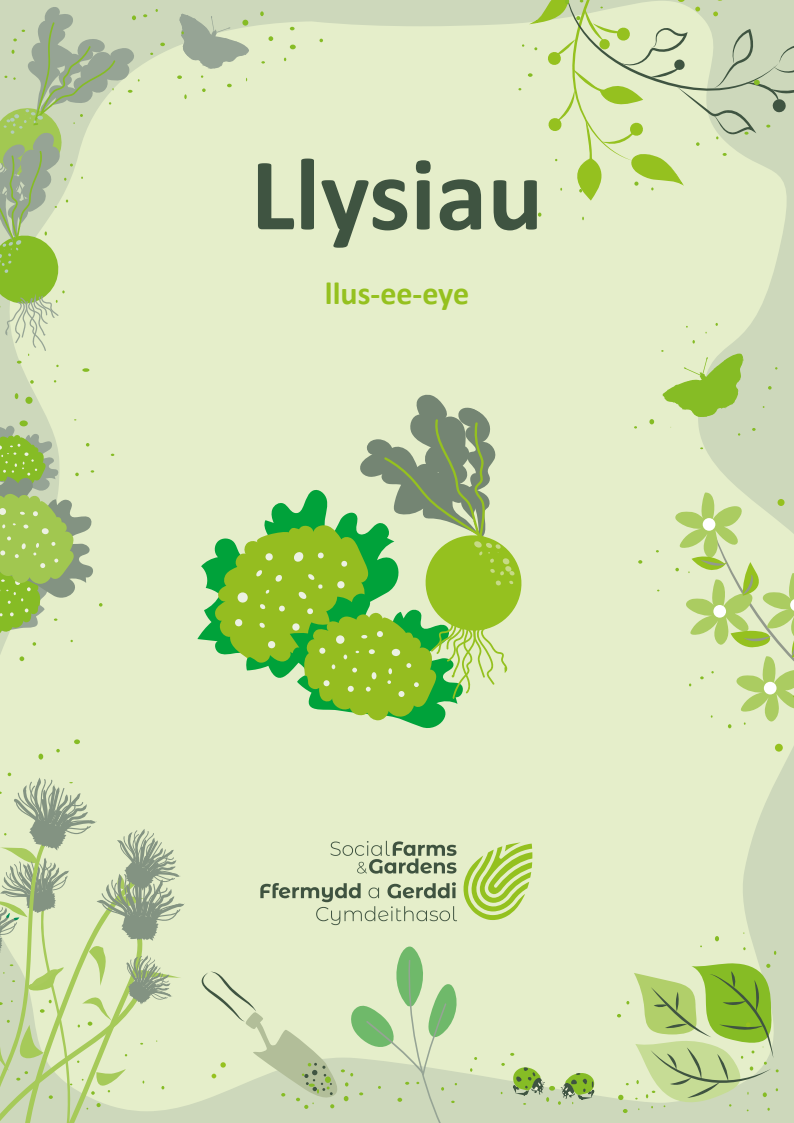


# Llysiau

llus-ee-eye



Social **Farms**  
& **Gardens**  
**Ffermydd a Gerddi**  
Cymdeithasol





# Fruit



Social **Farms**  
& **Gardens**  
**Ffermydd a Gerddi**  
Cymdeithasol



# Ffrwythau

phr-oy-th-eye (th as in thin)



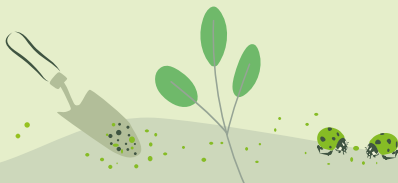
Social **Farms**  
& **Gardens**  
**Ffermydd a Gerdidi**  
Cymdeithasol



# Tree



Social **Farms**  
& **Gardens**  
**Ffermydd a Gerddi**  
Cymdeithasol



# Coeden

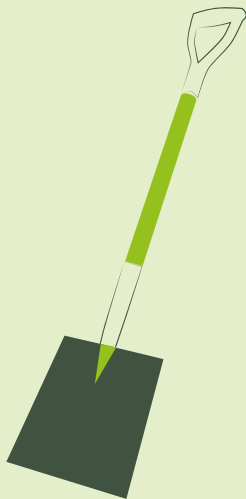
coy-den



Social **Farms**  
& **Gardens**  
**Ffermydd a Gerddi**  
Cymdeithasol



# Shovel

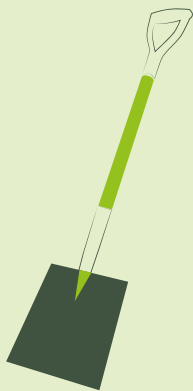


Social **Farms**  
& **Gardens**  
**Ffermydd a Gerddi**  
Cymdeithasol



# Rhaw

r-how (long ow as in brown)



Social **Farms**  
& **Gardens**  
**Ffermydd a Gerddi**  
Cymdeithasol



# Compost



Social **Farms**  
& **Gardens**  
**Ffermydd a Gerddi**  
Cymdeithasol



# Compost



Social **Farms**  
& **Gardens**  
**Ffermydd a Gerddi**  
Cymdeithasol





# Thank you



Social **Farms**  
& **Gardens**  
**Ffermydd a Gerddi**  
Cymdeithasol



# Diolch

dee-ol-ch (ch as in loch)



Social **Farms**  
& **Gardens**  
**Ffermydd a Gerddi**  
Cymdeithasol



# See you next time



Social **Farms**  
& **Gardens**  
**Ffermydd a Gerddi**  
Cymdeithasol



# Wela i ti tro nesaf

well-ah-ee-tee tro nessa



Social **Farms**  
& **Gardens**  
**Ffermydd a Gerdidi**  
Cymdeithasol



# Volunteers



Social **Farms**  
& **Gardens**  
**Ffermydd a Gerddi**  
Cymdeithasol



# Gwirfoddolwyr

g-wirr-vo-th-ol-wirr (wirr as  
mirr in mirror, th as in the)



Social **Farms**  
& **Gardens**  
**Ffermydd a Gerddi**  
Cymdeithasol



# Community Garden



Social **Farms**  
& **Gardens**  
**Ffermydd a Gerddi**  
Cymdeithasol



# Gardd gymunedol

ga-r-th (th as in the)  
gum-ee-ned-all



Social **Farms**  
& **Gardens**  
**Ffermydd a Gerddi**  
Cymdeithasol





# Fundraising



Social **Farms**  
& **Gardens**  
**Ffermydd a Gerddi**  
Cymdeithasol

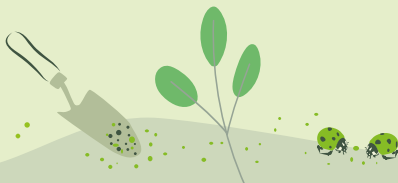


# Codi arian

code-ee arian (arian as in Marian)



Social **Farms**  
& **Gardens**  
**Ffermydd a Gerddi**  
Cymdeithasol



# Wheelbarrow



Social **Farms**  
& **Gardens**  
**Ffermydd a Gerddi**  
Cymdeithasol



# Wilber

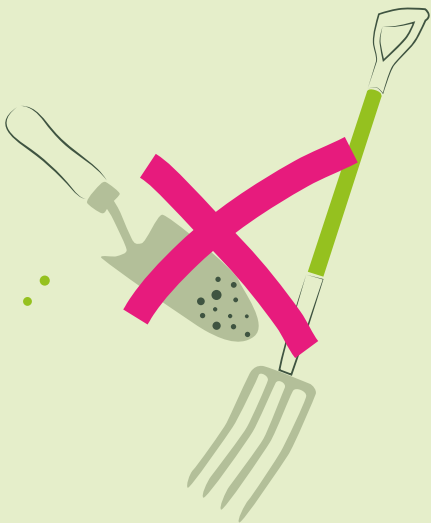
will-bearr



Social **Farms**  
& **Gardens**  
**Ffermydd a Gerddi**  
Cymdeithasol



# No dig

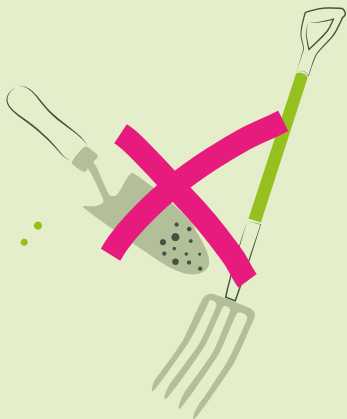


Social **Farms**  
& **Gardens**  
**Ffermydd a Gerddi**  
Cymdeithasol



# Dim palu

dim pal-ee



Social **Farms**  
& **Gardens**  
**Ffermydd a Gerddi**  
Cymdeithasol



# Watering Can



Social **Farms**  
& **Gardens**  
**Ffermydd a Gerddi**  
Cymdeithasol



# Can ddyfrio

can thuv-ree-oh



Social **Farms**  
& **Gardens**  
**Ffermydd a Gerddi**  
Cymdeithasol

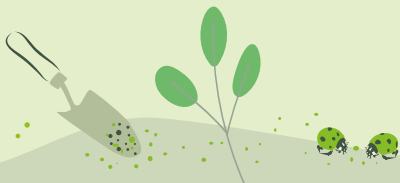




# Tools



Social **Farms**  
& **Gardens**  
**Ffermydd a Gerddi**  
Cymdeithasol



# Offer

off-airr



Social **Farms**  
& **Gardens**  
**Ffermydd a Gerdidi**  
Cymdeithasol



# Workshop

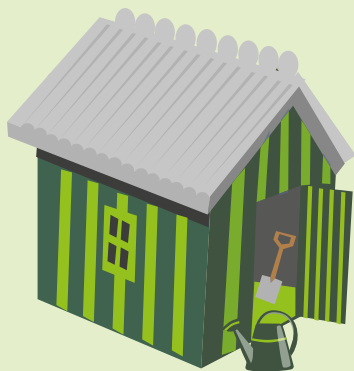


Social **Farms**  
& **Gardens**  
**Ffermydd a Gerddi**  
Cymdeithasol



# Gweithdy

gwa-ee-th-dee (th as in thunder)



Social **Farms**  
& **Gardens**  
**Ffermydd a Gerddi**  
Cymdeithasol



# Toilet

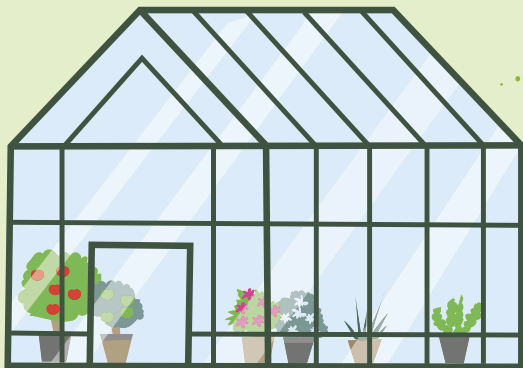


Social **Farms**  
& **Gardens**  
**Ffermydd a Gerddi**  
Cymdeithasol





# Glasshouse

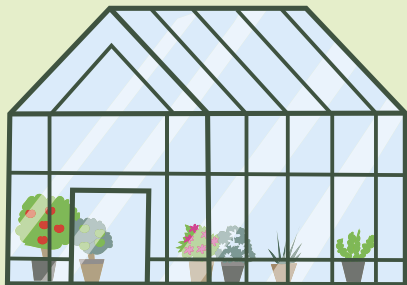


Social **Farms**  
& **Gardens**  
**Ffermydd a Gerddi**  
Cymdeithasol



# Tŷ Gwydr

Tee gwid-irr (irr as irr in mirror)



Social **Farms**  
& **Gardens**  
**Ffermydd a Gerddi**  
Cymdeithasol





# Pot



Social **Farms**  
& **Gardens**  
**Ffermydd a Gerddi**  
Cymdeithasol



# Crochan

Croa-chan (croa as in croak,  
ch as in Loch not China)



Social **Farms**  
& **Gardens**  
**Ffermydd a Gerddi**  
Cymdeithasol



# Raining



Social **Farms**  
& **Gardens**  
**Ffermydd a Gerddi**  
Cymdeithasol



# Bwrw Glaw

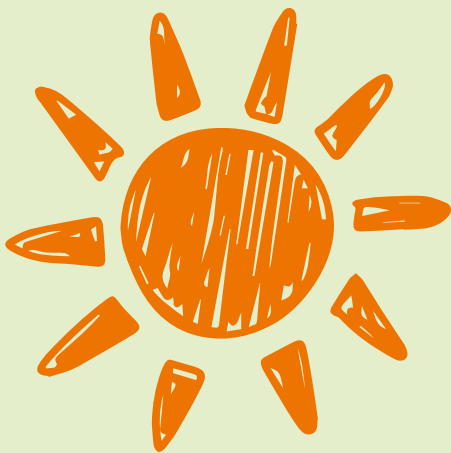
booroo glah-oo



Social **Farms**  
& **Gardens**  
**Ffermydd a Gerddi**  
Cymdeithasol



# Sunny



Social **Farms  
& Gardens**  
**Ffermydd a Gerddi**  
Cymdeithasol



# Heulog

hile-og (hile as in mile)



Social **Farms**  
& **Gardens**  
**Ffermydd a Gerddi**  
Cymdeithasol



Social **Farms**  
& **Gardens**  
**Ffermydd a Gerddi**  
Cymdeithasol



**Tyfu**  
**Canolbarth Cymru**  
**Growing**  
**Mid Wales**

  
**Powys**

Social **Farms**  
& **Gardens**  
**Ffermydd a Gerddi**  
Cymdeithasol



**Tyfu**  
**Canolbarth Cymru**  
**Growing**  
**Mid Wales**



**Powys**

