

Becoming Covid-Secure

1A Site Focus. May 2020

Presentation by Andy Bater, Operations Manager, HCA



Becoming Covid-Secure

1A poses the most significant challenges to becoming Covid-Secure out of our 3 sites. To state the obvious – it is a basement level confined space with minimal natural ventilation and light. The main factors to consider are...



Becoming Covid-Secure

WHY?

The transmission of COVID-19 is thought to occur mainly through respiratory droplets generated by coughing and sneezing, and through contact with contaminated surfaces.

The predominant modes of transmission are assumed to be droplet and contact.

This is consistent with a recent review of modes of transmission of COVID-19 by the World Health Organization (WHO).

Becoming Covid-Secure

WHY?

Guiding principles:

- We will follow & implement PHE guidelines
 - Safety of staff and members is paramount
- Keep local - mitigate use of public transport
 - Staff - default position is work from home
 - Members - within walking distance
- By invitation only to re-started physical sessions
- Digital sessions to continue for foreseeable future
 - New mix of digital and physical sessions
- We will lead by example, reminding each other of the guidelines and constructively confronting if not followed

Becoming Covid-Secure

1A Site Focus

Entrance / Exit



Becoming Covid-Secure

1A Site Focus

Entrance / Exit

- Single access point for all 1A services
 - Entry buzzer to be regularly cleaned?
 - Use knuckles rather than fingertips
 - Exit button? Use elbow!?!?
 - Signage to explain entry/exit policy
- Child gates at entrance lobby and stairs/lift access
- No immediate hand washing facilities
 - Will require hand sanitisation point immediately by door
- Staffed reception desk touchpoints
 - Visitor signing book/pen; alternative options
 - Reception staff wear PPE? Masks?
- Entrance lobby waiting time needs to be minimal
 - Only really suitable for one visitor at a time
 - Visitor chairs – to be removed?
- Covid-secure policy to be visibly displayed
 - Visitor contract ‘we expect you to ...’

Becoming Covid-Secure

1A Site Focus

Stairs / Lift



Becoming Covid-Secure

1A Site Focus

Stairs / Lobby

- Space is the main issue
- No crossing on stairs; ideally one-way traffic
 - Blind spot mirror to be wall mounted at the turn?
 - Handrails to be cleaned regularly
- Lift – one person use only (or same household group)
 - 2m distance waiting for lift possible issue but how likely if limiting access through reception?
 - Lift button to be cleaned regularly

Becoming Covid-Secure

1A Site Focus

Corridor Lobby area /
Toilets



Becoming Covid-Secure

1A Site Focus

Corridor Lobby area / Toilets

- Multiple touchpoints are an issue
- Toilets - toilet seats, taps, doors ...

The WHO has acknowledged the shortcomings of conventional public toilet design, distributing advice on safe hand washing that instructs users that in order to be protected from the virus, people should use a paper towel to turn off the tap after washing their hands.

- Fire doors - must not be propped open

Current research says the coronavirus family of viruses can survive on some surfaces, like door handles, for an average of four to five days. Like all droplet infections, SARS-CoV-2 can spread via hands and frequently touched surfaces. Although it hasn't previously been seen in humans and therefore hasn't been studied in detail, experts believe it spreads similarly to other known coronaviruses.


Becoming Covid-Secure

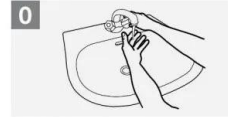
1A Site Focus

Corridor Lobby area / Toilets

How to Handwash?

WASH HANDS WHEN VISIBLY SOILED! OTHERWISE, USE HANDRUB

 **Duration of the entire procedure: 40-60 seconds**



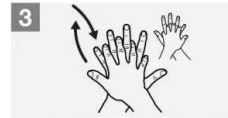
0 Wet hands with water;



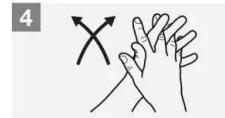
1 Apply enough soap to cover all hand surfaces;



2 Rub hands palm to palm;



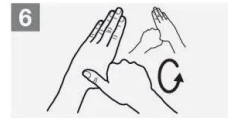
3 Right palm over left dorsum with interlaced fingers and vice versa;



4 Palm to palm with fingers interlaced;



5 Backs of fingers to opposing palms with fingers interlocked;



6 Rotational rubbing of left thumb clasped in right palm and vice versa;



7 Rotational rubbing, backwards and forwards with clasped fingers of right hand in left palm and vice versa;



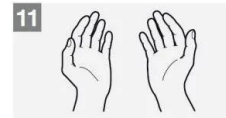
8 Rinse hands with water;



9 Dry hands thoroughly with a single use towel;



10 Use towel to turn off faucet;



11 Your hands are now safe.



World Health
Organization

Patient Safety
A World Alliance for Safer Health Care

SAVE LIVES
Clean Your Hands

All reasonable precautions have been taken by the World Health Organization to verify the information contained in this document. However, the published material is being distributed without warranty of any kind, either expressed or implied. The responsibility for the interpretation and use of the material lies with the reader. In no event shall the World Health Organization be liable for damages arising from its use. WHO acknowledges the Hospital Universitari de Gènere (HUG), in particular the members of the Infection Control Programme, for their active participation in developing this material.

May 2009



Holborn
Community
Association

Becoming Covid-Secure

1A Site Focus

Door Hooks

<https://youtu.be/Yy9WkVE50to>



[Hands-Free Design](#)

<https://youtu.be/Yy9WkVE50to>

**KEEP
CALM
AND
USE YOUR
ARM**



Do not touch the door
with your hands



Use the hook to open
with your forearm

Becoming Covid-Secure

1A Site Focus

Door foot grabs



Hands Free Door Opening Kit to Help Reduce Coronavirus Spread



The GENLAB hands free door opener has been developed to help reduce the risk of cross contamination that could occur when opening latch free doors with your hands in public places. Although designed specifically to help reduce the spread of Coronavirus (COVID-19) but will also help prevent the spread of other infections found on toilet or other commonly used public doors.

The kits can be retrofitted to any type of commercial, industrial or household doors, allowing operators to open any latch free locking door using their feet, in an easy to operate motion.

Manufactured from 3mm thick stainless steel pull plate and supplied with a 3mm thick rear support plate, it is designed for heavy industrial / commercial continuous use.

They can be installed internally, or, on external doors and fully waterproof. Supplied with connection kit to suit doors up to 50mm* thick and installed in less than 2 minutes per door. OEM custom branding and powder coating also available.



* Thicker connection kits available

Features

- Heavy duty 3mm 304 stainless steel
- Retrofit most types of doors
- Installation time < 2 minutes per door
- Suitable for internal or external use
- Available in any colour upon request
- Compact size... 6 cm x 12cm x 10cm (HxWxD)

Sales Price

- £24.95 each (1+ off)
- £19.95 each (5+ off)
- £16.95 each (10+ off)
- £13.95 each (50+ off)
- Phone for larger volumes or for 'critical company' prices



Tanhouse Lane, Widnes, Cheshire WAB 0SR
Tel 0151 424 5001 enquiries@genlab.co.uk www.genlab.co.uk



<https://www.stepnpull.co.uk/s-hop/>

<https://www.genlab.co.uk/90-hands-free-door-opening-kit-to-help-reduce-coronavirus-spread>

<https://www.doorfit.co.uk/architectural-hardware/foot-operated-door-holder-polished-brass-120mm-ia4306>



Becoming Covid-Secure

1A Site Focus

Office / DM computer room



Becoming Covid-Secure

1A Site Focus

Arts Space



Becoming Covid-Secure

1A Site Focus

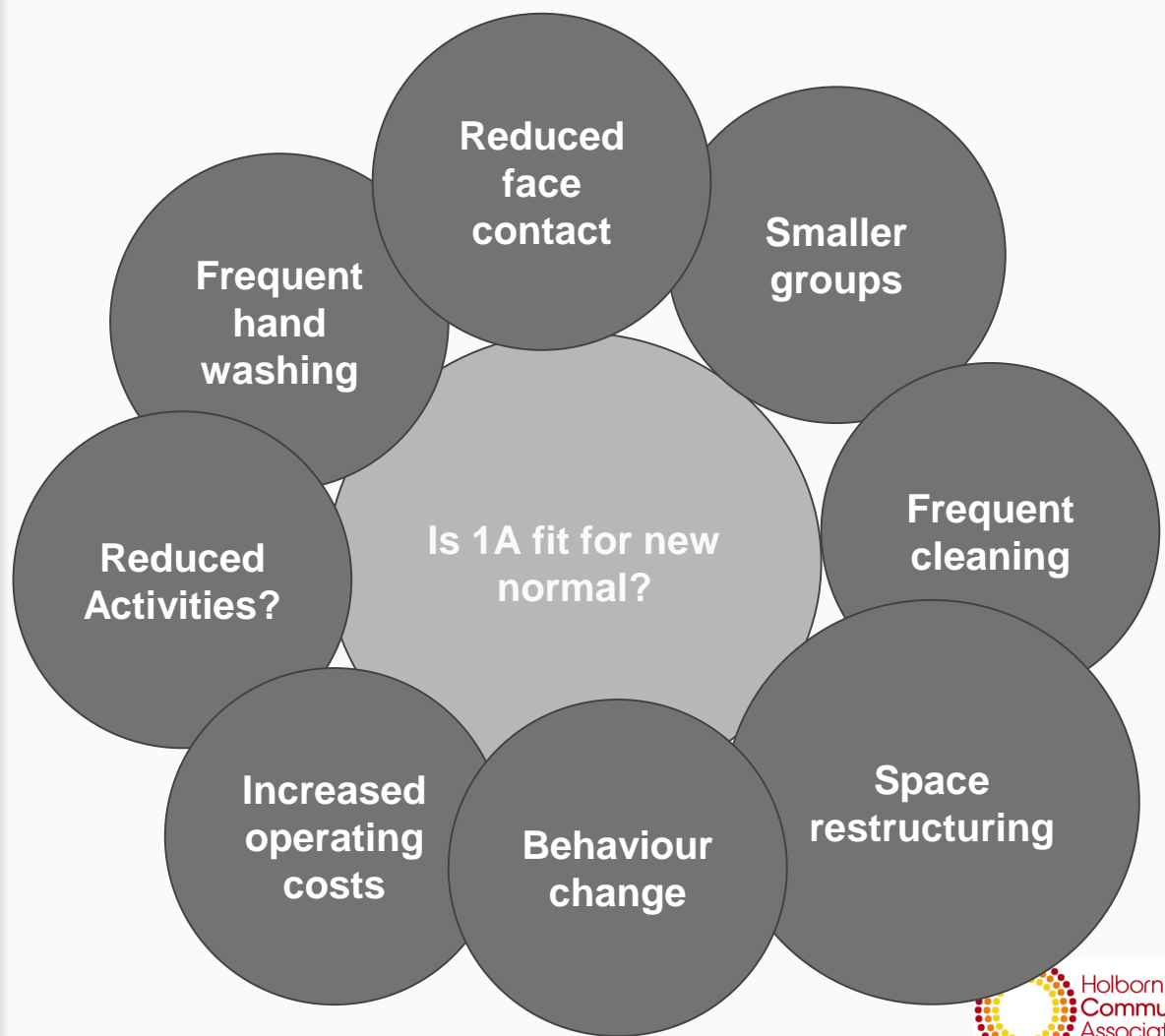
Pottery Studio



Becoming Covid-Secure

1A Site Focus

Next steps..?



Becoming Covid-Secure

1A Site Focus

Next steps..?

